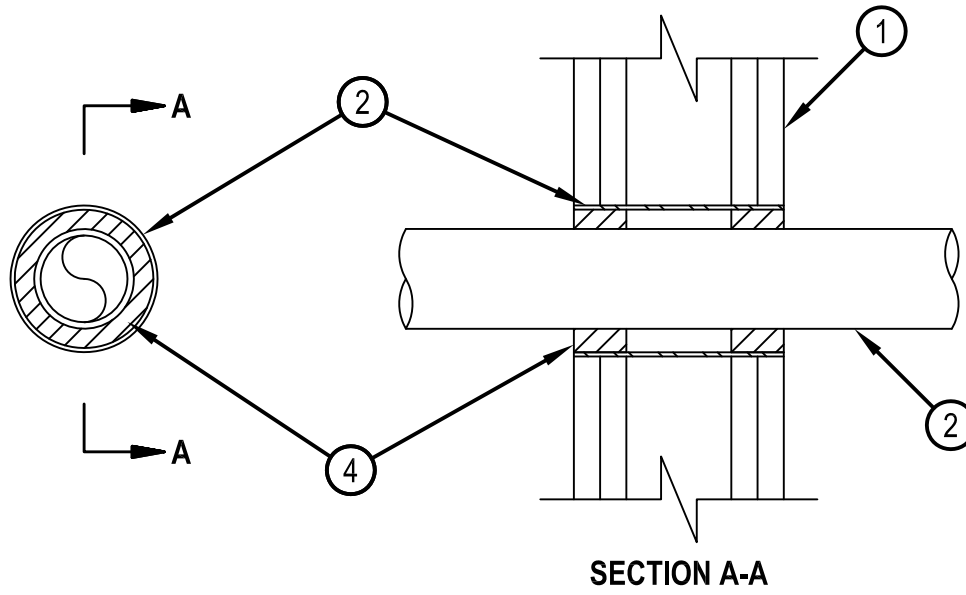




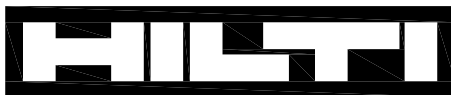
Classified by  
Underwriters Laboratories, Inc.  
to UL 1479

**System No. W-L-2128**  
**F Rating — 1 and 2 Hr (See Item 1)**  
**T Rating — 0 Hr**

WL 2128



1. Wall Assembly — The 1 or 2 hr fire-rated gypsum wallboard/stud wall assembly shall be constructed of the materials and in the manner specified in the individual U300, U400, V400 or W400 Series Wall and Partition Designs in the UL Fire Resistance Directory and shall include the following construction features:
    - A. Studs — Wall framing may consist of either wood studs or steel channel studs. Wood studs to consist of nom 2 by 4 in. (51 by 102 mm) lumber spaced 16 in. (406 mm) OC. Steel studs to be min 2-1/2 in. (64 mm) wide and spaced max 24 in. (610 mm) OC.
    - B. Gypsum Board\* — 5/8 in. (16 mm) thick, 4 ft (122 cm) wide with square or tapered edges. The gypsum wallboard type, thickness, number of layers, fastener type and sheet orientation shall be as specified in the individual Wall and Partition Design. Max diam of opening is 3-1/2 in. (89 mm).
  2. Metallic Sleeve Optional — Nom 3-1/2 in. (89 mm) (or smaller) cylindrical sleeve fabricated from min 0.016 in. thick (28 gauge) galv sheet steel and having a min 1-1/4 in. (32 mm) lap along longitudinal seam. Length of sleeve to be installed flush with wall surfaces.
  3. Through Penetrants — One nonmetallic pipe installed within the firestop system.. Pipe may be installed at an angle not greater than 45 degrees from perpendicular. Pipe to be rigidly supported on both sides of wall assembly. The space between pipe and periphery of opening shall be min 1/4 in. (6 mm) to max 11/16 in. (17.5 mm). The following types and sizes of nonmetallic pipes may be used:
    - A. Polyvinyl Chloride (PVC) Pipe — Nom 2 in. (51 mm) diam (or smaller) Schedule 40 PVC pipe for use in closed (process or supply) or vented (drain, waste or vent) piping systems.
    - B. Chlorinated Polyvinyl Chloride (CPVC) Pipe — Nom 2 in. (51 mm) diam (or smaller) SDR13.5 CPVC pipe for use in closed (process or supply) piping systems.
  4. Fill, Void or Cavity Materials\* — Sealant — For 1 hr F Rating, min 5/8 in. (16 mm) thickness of fill material applied within the annulus, flush with both surfaces of wall. For 2 hr F Rating, min 1-1/4 in. (32 mm) thickness of fill material applied within annulus, flush with both surfaces of wall. HILTI CONSTRUCTION CHEMICALS, DIV OF HILTI INC — FS-ONE Sealant or FS-ONE MAX Intumescent Sealant
- \* Indicates such products shall bear the UL or cUL Certification Mark for jurisdictions employing the UL or cUL Certification (such as Canada), respectively.



**Hilti Firestop Systems**

Reproduced by HILTI, Inc. Courtesy of  
Underwriters Laboratories, Inc.  
January 26, 2015